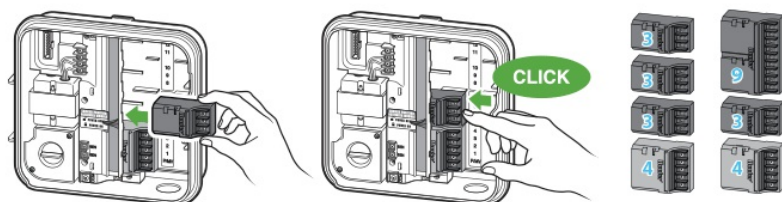


# HPC - Installing Station Modules

The HydraWise enabled HPC Controller is supplied with a base 4-station module. Additional modules may be added separately in increments of 3 stations (PCM-300), 9 stations (PCM-900), or 16 stations (PCM-1600). In total, the system may be expanded up to 23 conventional stations. Additional modules are sold separately.

**IMPORTANT:** To expand your HPC Controller to 16 or 23 stations with a PCM-900 or PCM-1600 Module, you must install one PCM-300 Module in the first expansion slot (stations 5–7). Next, install the PCM-900 or PCM-1600 Module in the upper two expansion slots. These modules will not fit in any other station output slot. To use the PCM-1600 Module with an HPC Controller, the controller firmware must be version 4.31 or greater, and module firmware version 1.14 or greater. Check the version at the controller: **Status > Controller (Connection) Status**.

## Installing PCM-300/PCM-900 Modules



The HPC Controller is designed with a simple-to-use **POWER LOCK** feature that assures that the modules are energized and firmly secured into the controller. The **POWER LOCK** can unlock or lock all modules at one time by simply pushing the tab.

1. Slide the **POWER LOCK** into the **POWER OFF** (unlocked) position. Insert the modules into the appropriate sequential position in the controller cabinet. **Note:** When in the **POWER OFF** (unlocked) position, the controller display will be blank.
2. Once each module is in place, slide the **POWER LOCK** into the **POWER ON** (locked) position to energize and secure the modules into the controller.
3. The controller will automatically recognize the correct number of stations. It is not

necessary to press the reset button or cycle power to the controller.

### Installing the PCM-1600 Module

1. Slide the **POWER LOCK** into the **POWER OFF** (unlocked) position. Insert a PCM-300 Module into the middle output slot if not installed already.
2. Insert the PCM-1600 Module into the top output slot.
3. Once all modules are in place, slide the **POWER LOCK** into the **POWER ON** (locked) position to energize and secure the modules into the controller.
4. The controller will automatically recognize the correct number of stations. In some cases, it may be necessary to cycle power to the controller.

