

Offline Mode - Accessing Offline Mode

Offline Mode

If the controller loses its internet connection for more than 24 hours, you'll receive a notification email. The controller will then go into offline mode. In offline mode, your controller won't be able to access local weather conditions such as rainfall or evaporation. As a result, it will revert to a predefined program.

- For **Smart Watering** zones, the controller will adjust each zone's watering length based on your offline watering budget and will water at each zone's configured peak watering frequency.
- For **Time-Based Watering** zones, the controller will adjust each zone's watering length based on your offline watering budget and will water at each zone's configured watering frequency.
- Note that **Cycle and Soak** is not supported in offline mode and each zone will water for its full watering length without pausing.
- The controller will only water at your configured **Program Start Times**.

To set your controller to **offline Mode** for manual configuration, please follow the steps below:

1. From the main menu, tap on **Settings**.
2. Tap on **Offline Settings**.
3. Tap on **Disable Wi-Fi**.
4. You will be presented with a warning dialogue. Please make sure you understand the warning before proceeding. If you're sure that you want to go offline, tap **Go Offline**.
5. Now that your controller is in Offline Mode, you can configure it manually by tapping on **Program Start Times**.
6. From this screen, you can manually configure each zone according to your desired schedule. Simply tap on **Add** to add a program start time and follow the steps below. You can toggle between zones by tapping on **Next/Previous** or you can leave the start time to **APPLY to ALL ZONES**.

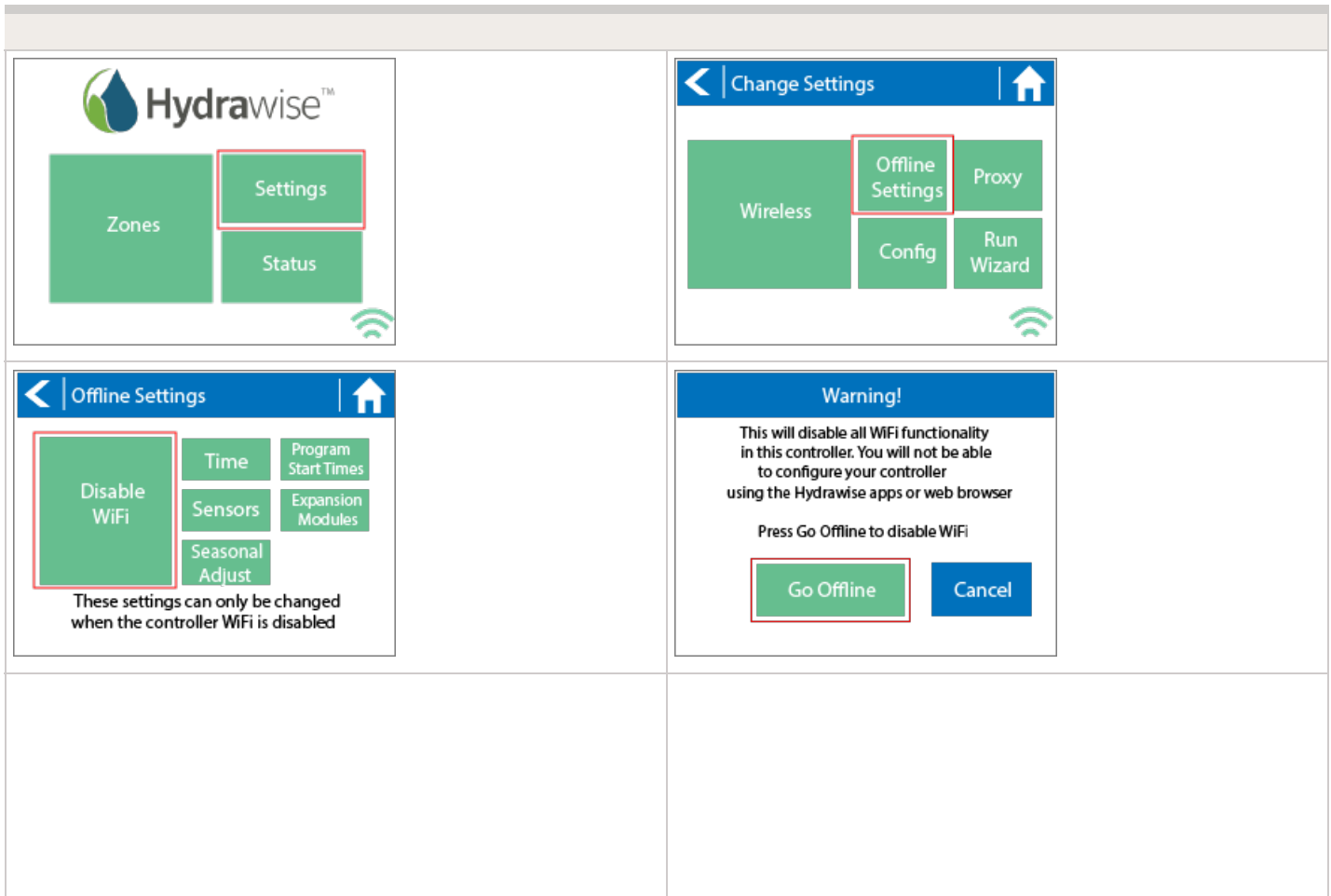
Applying the start time to **ALL ZONES** will run through all zones with a single start time.

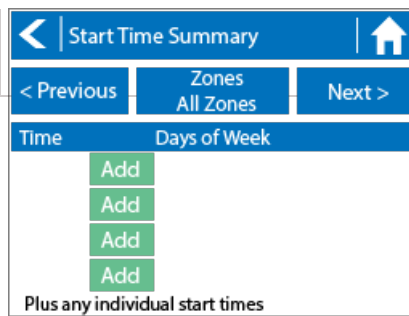
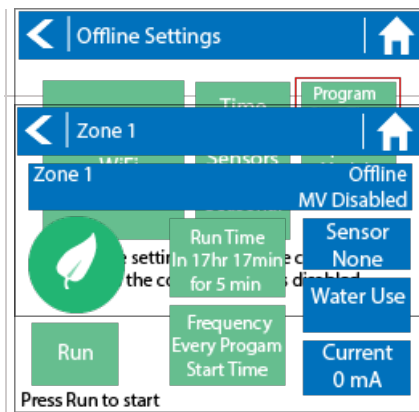
- Tap **ADD** in the start times menu.
- Select the green box upper in left to enter **PROGRAM START TIME (24 hr format)**
- Tap the **DAYS** to be selected **after** finished with start time entry.
- Tap **CONFIRM** to save the start time entry.
- Add a second start time for all zones or single zone if desired.
- Tap the **HOME** icon (upper right) to allow station run times setup.

NOTE: Each zone can have up to four program start times and an additional four start times under the **All Zones** section as shown below.

7. From the home screen, you can manually configure each zone run time. Simply tap on **ZONES** to add a zone run time and follow the steps below. You can toggle between zones by tapping on **each zone number**.

- Tap **ZONES** in the home menu.
- Tap the first zone to edit, (**For Example: ZONE 1**).
- Tap on **RUN TIME** in the center of the screen.
- Enter **RUN TIME (minutes:seconds format)**, then press **OK** to save entry.
- Repeat steps **1-4** for station run times.





NOTE: To get your controller back in online mode, follow the above steps, enable Wi-Fi, reconnect to your SSID (Wi-Fi connection), and let the controller synchronize with your online Hydrowise account.